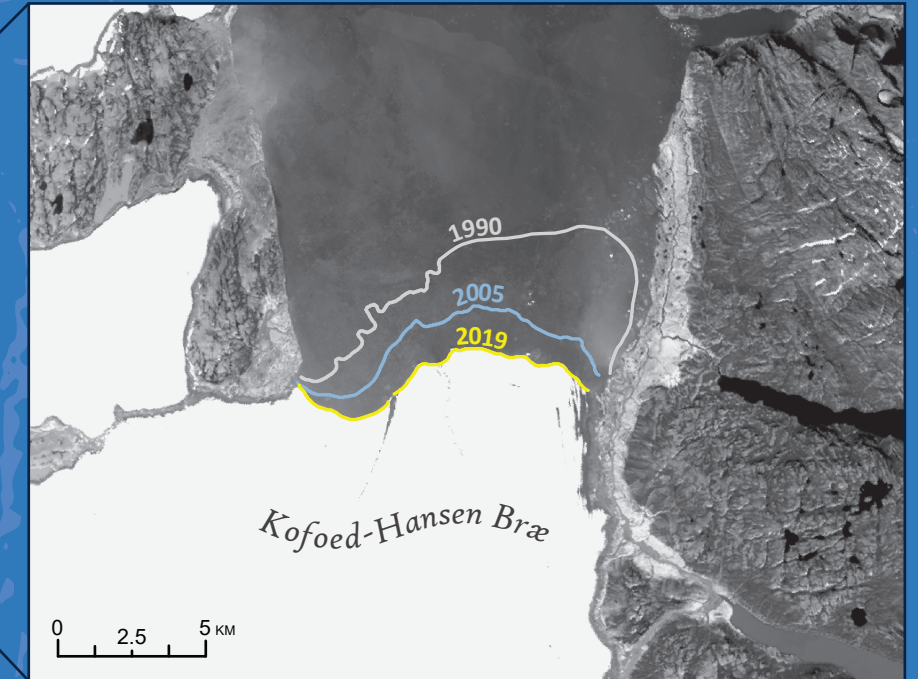
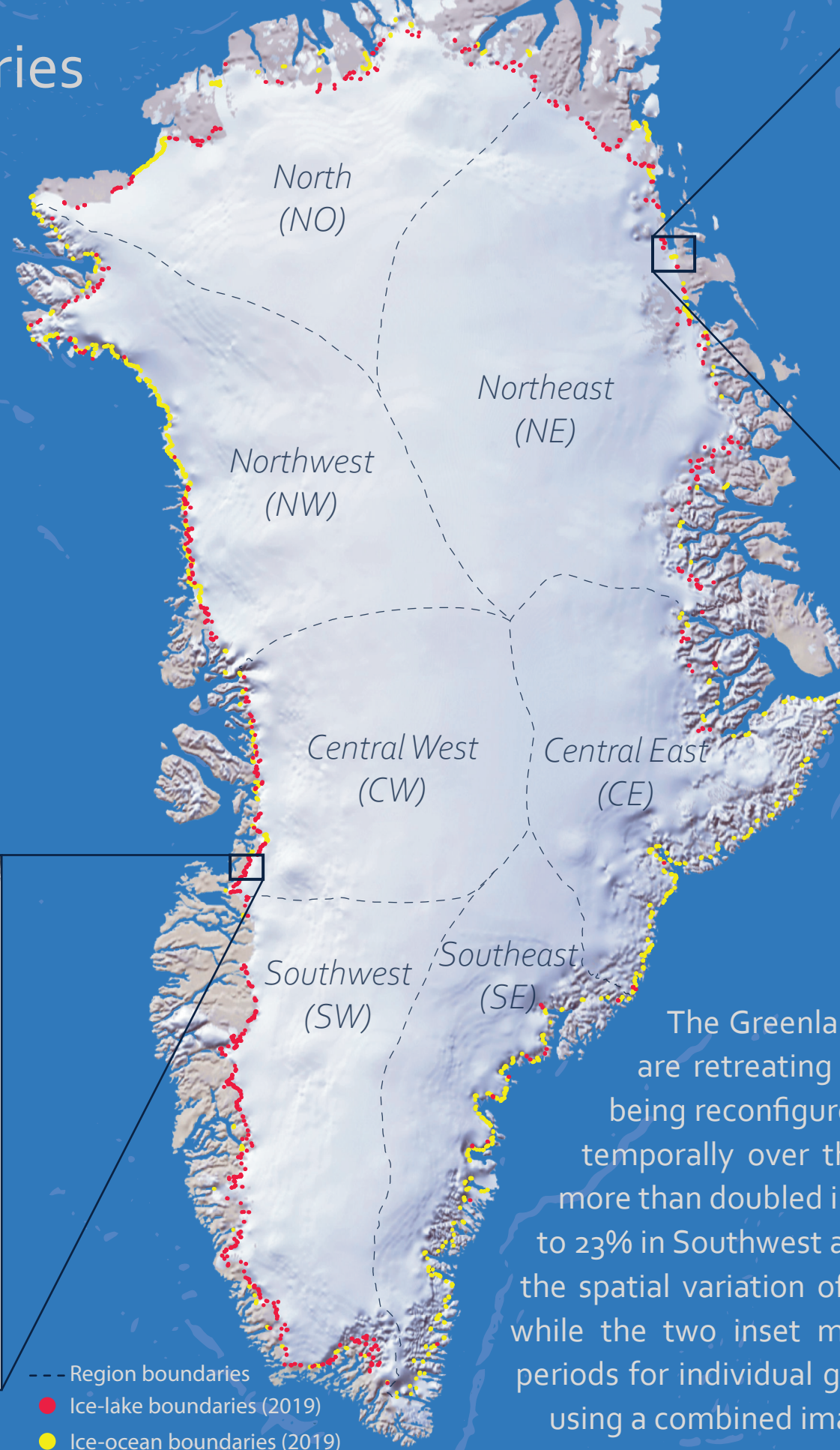
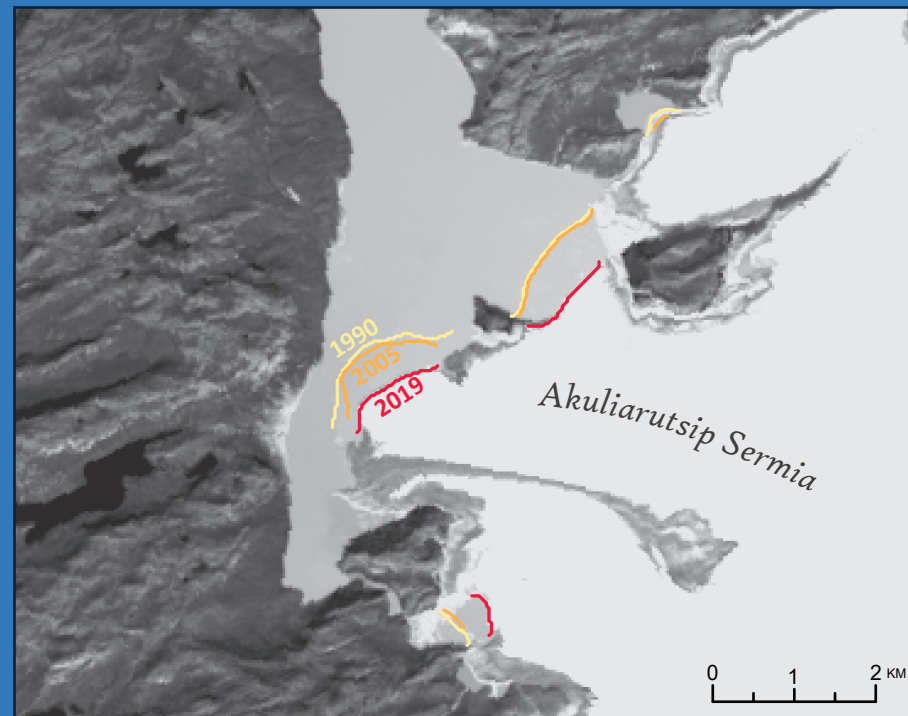
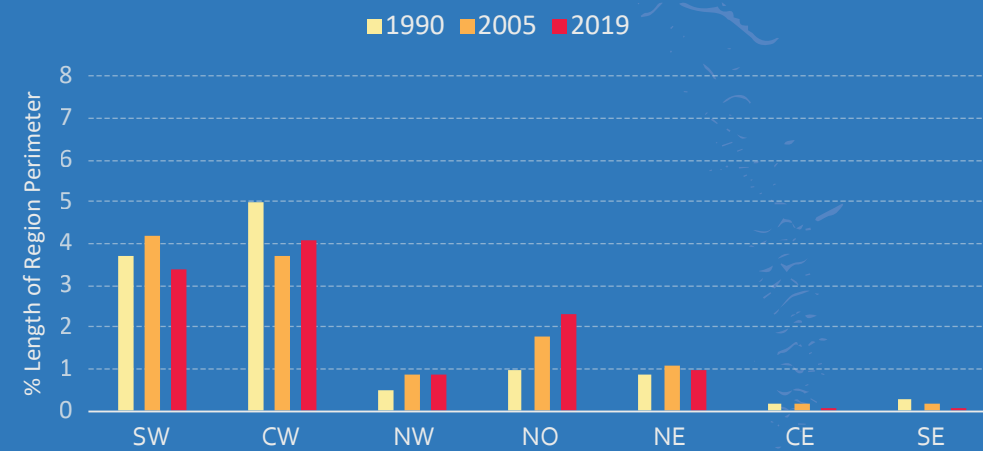
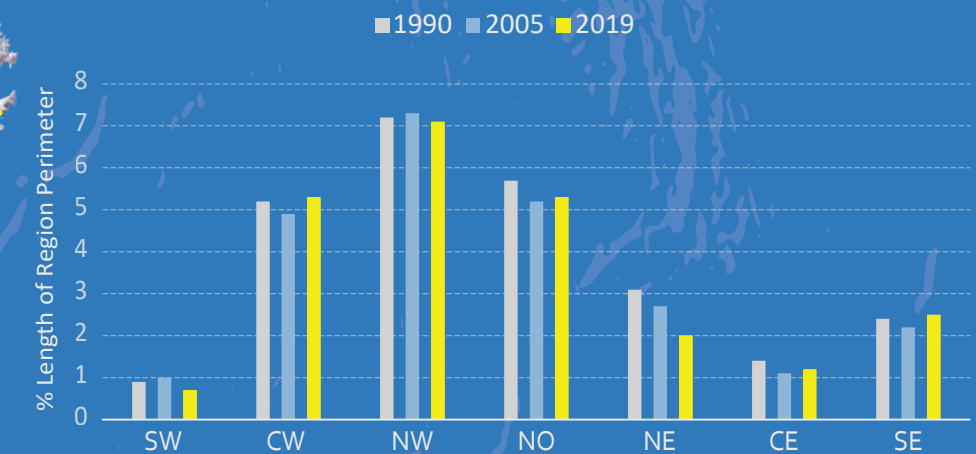


Dynamic Ice-Water Boundaries of the Greenland Ice Sheet

ICE-LAKE BOUNDARIES



ICE-OCEAN BOUNDARIES



The Greenland Ice Sheet's marine and land terminating glaciers are retreating inland, and its freshwater and oceanic margins are being reconfigured. This reconfiguration has varied both spatially and temporally over the last three decades, as ice-lake boundaries have more than doubled in North and Northwest Greenland but declined by up to 23% in Southwest and Central West Greenland. The main map visualizes the spatial variation of ice-water boundaries for all of Greenland in 2019, while the two inset maps explore temporal trends between three time periods for individual glaciers. The data was derived from Landsat imagery using a combined image classification and edge detection algorithm.